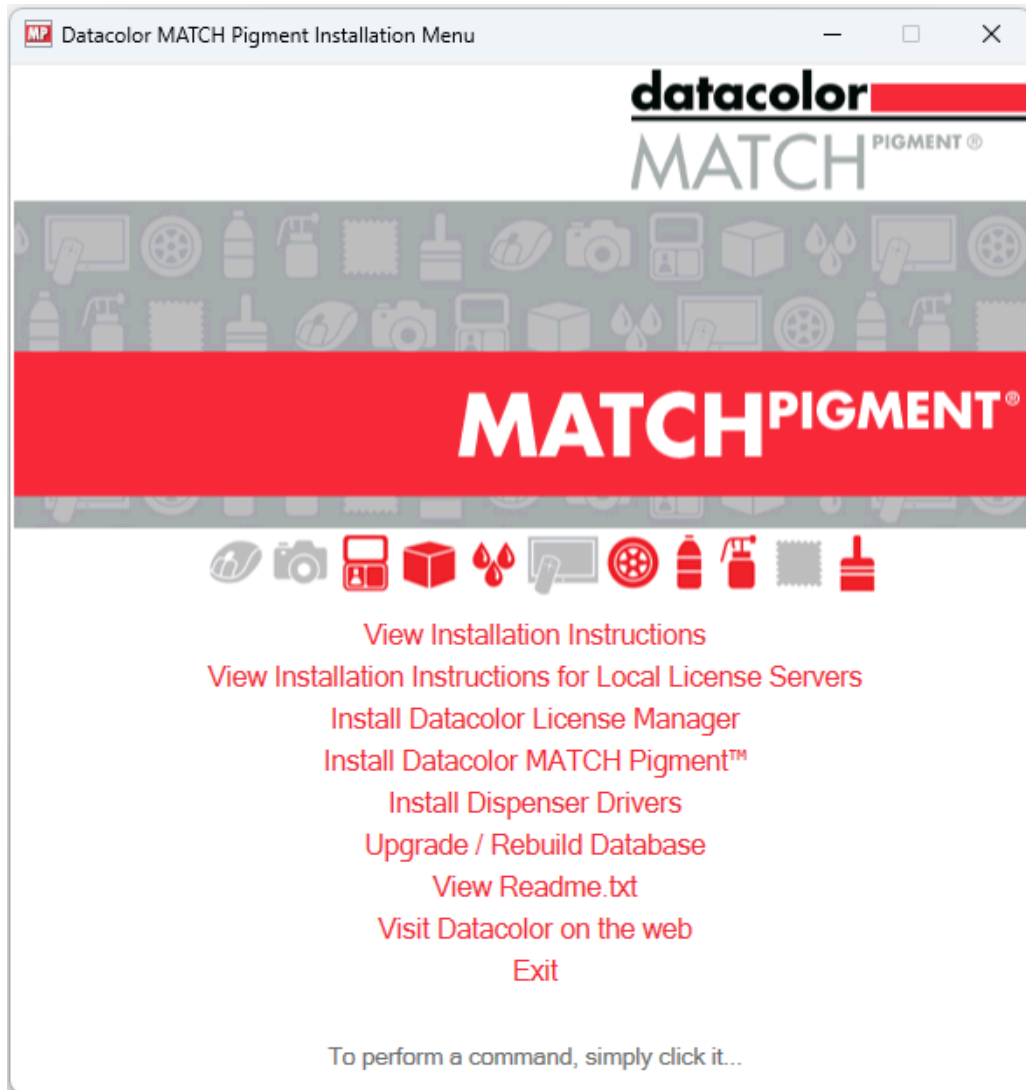


# Datacolor MATCH<sup>PIGMENT</sup>



## Installation Instructions



## **Datacolor MATCH<sup>PIGMENT</sup>™ Stand-Alone Installation Guide**

All efforts have been made to ensure the accuracy of the information presented in this format. However, should any errors be detected, Datacolor appreciates your efforts to notify us of these oversights.

Changes are periodically made to this information and are incorporated into forthcoming versions. Datacolor reserves the right to make improvements and/or changes in the product(s) and/or program(s) described in this material at any time.

© 2024 Datacolor. Datacolor, SPECTRUM and other Datacolor product trademarks are the property of Datacolor.

Microsoft and Windows are either registered trademarks of Microsoft Corporation in the United States and/or other countries.

To obtain information on local agents, sales or support contact, visit our website at <https://www.datacolor.com/contact/business-solutions-contacts/>

### **Support Questions?**

If you need help with a Datacolor product, please contact support at: <http://industrial.datacolor.com/support>.

# Contents

<b>INTRODUCTION</b> .....	<b>4</b>
SYSTEM REQUIREMENTS .....	5
SYBASE DATABASE INSTALLATION.....	5
TERMINAL SERVER CONFIGURATIONS .....	5
NEW INSTALLATION VS. UPGRADE .....	5
FIREWALL BLOCKING MESSAGES .....	5
<b>DATACOLOR MATCH<sup>PIGMENT</sup> INSTALLATION</b> .....	<b>6</b>
OVERVIEW.....	6
INSTALLATION PROCEDURE .....	7
<b>DATACOLOR TOOLS INSTALLATION</b> .....	<b>19</b>
OVERVIEW.....	19
STARTING DATACOLOR MATCH <sup>PIGMENT</sup> .....	20

# Introduction

---

This document will provide information on how to install Datacolor Match Pigment on a new system or as an upgrade for an existing installation.

This document is for stand-alone computer systems.

## The installation procedure includes the following steps:

- **Installation of Sybase Database Management Software**

Sybase is a database management system that is required to run Datacolor software. You will need the ISO image labeled "Sybase" to begin the installation process. Sybase V17.0.10.6089 must be installed **before** installing or updating Datacolor Match Pigment.

- **Installation of Datacolor MATCH<sup>PIGMENT</sup>**

The Datacolor Match Pigment program is on a separate ISO image and must be installed **after** installing Sybase.

- **Installation of Datacolor TOOLS**

The Datacolor TOOLS program is on a separate ISO image and should be installed after installing Datacolor Match Pigment. Please refer to the Datacolor TOOLS installation instructions located on the TOOLS ISO image.

- **Software License Validation**

The installation will ask you to activate your license. Make sure you have a valid activation code, and that the maintenance date expiry of that license is greater than the release date of the installer. For Offline and Local License Server activation and installation, please refer to their respective installation instructions.

---

## System Requirements

Follow the link below for information on the system requirements:

<https://www.datacolor.com/business-solutions/downloads>

Please contact Datacolor for Terminal Server hardware and software requirements.

---

## Sybase Database Installation

Sybase is a database management system that is required to run Datacolor software. Sybase V17 must be installed **before** installing or updating Datacolor Match Pigment.

*For step-by-step instructions, see the Installation Instructions found on the installation menu of the SYBASE ISO image. To view a PDF version, browse to the folder "Documents" on the SYBASE ISO image and select the file "Sybase Installation Guide.pdf".*

---

## Terminal Server Configurations

*For information on installing Datacolor Match Pigment on a terminal server, please see the Installation Instructions found on the installation menu of the SYBASE ISO image. To view a PDF version, browse to the folder "Documents" on the SYBASE ISO image and select the file "Sybase Installation Guide.pdf".*

---

## New Installation vs. Upgrade

When preparing to upgrade your system, we strongly recommend the following:

- Restart the system before you begin the upgrade. ***This is especially important if you are running a previous release of Datacolor MATCH<sup>PIGMENT</sup>***. This is done to clear the memory of any modules that might interfere with the program upgrade.
- Store the data on the Datacolor TOOLS desktop before you begin the upgrade. *See also Datacolor TOOLS User Guide, Appendix for a list of all files that should be backed up prior to performing an upgrade.*

---

## Firewall Blocking Messages

If you have enabled a firewall on the system, you may see a Windows Security dialog box on several occasions during the installation.

You must click **Unblock** to continue the installation.

# Datacolor MATCH<sup>PIGMENT</sup> Installation

---

## Overview

The Datacolor MATCH<sup>PIGMENT</sup> product includes both Datacolor MATCH<sup>PIGMENT</sup> and Datacolor TOOLS. These are two separate programs contained on two separate ISO images. *Please follow these instructions, to ensure successful installation of Datacolor MATCH<sup>PIGMENT</sup> and Datacolor TOOLS.*

### NOTE

If Sybase V17 is not installed on the system you cannot complete the installation of Datacolor MATCH<sup>PIGMENT</sup> or Datacolor TOOLS.

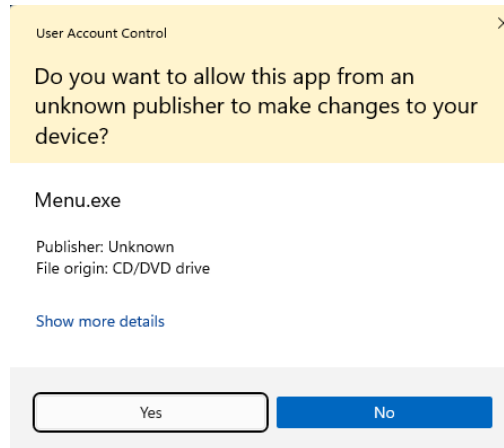
## Before You Begin

- Microsoft Windows® should be properly installed on your computer.
- You must have Windows Administrator rights to install this software.
- **Restart the system before installing the software.** This removes any memory-resident modules that may interfere with the installation and is especially important if you have been running a previous version of Datacolor MATCH<sup>PIGMENT</sup>.
- Install Sybase V17 database management software.
- Close all other programs that are running.
- Have all program installation ISO images readily available.
- Install Datacolor MATCH<sup>PIGMENT</sup> before installing Datacolor TOOLS.

## Installation Procedure

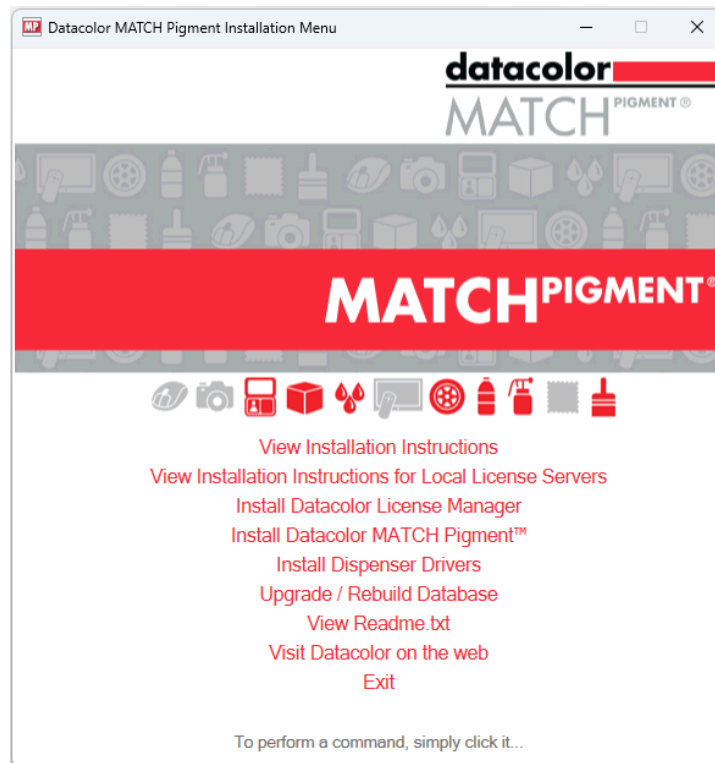
To install Datacolor MATCH<sup>PIGMENT</sup>:

1. Download the ISO image installer and mount it on your machine. Run Menu.exe and a prompt will be displayed.



Click **Yes**.

The Datacolor MATCH<sup>PIGMENT</sup> installation menu should appear automatically:



If you do not see the Datacolor MATCH<sup>PIGMENT</sup> installation menu, do the following:

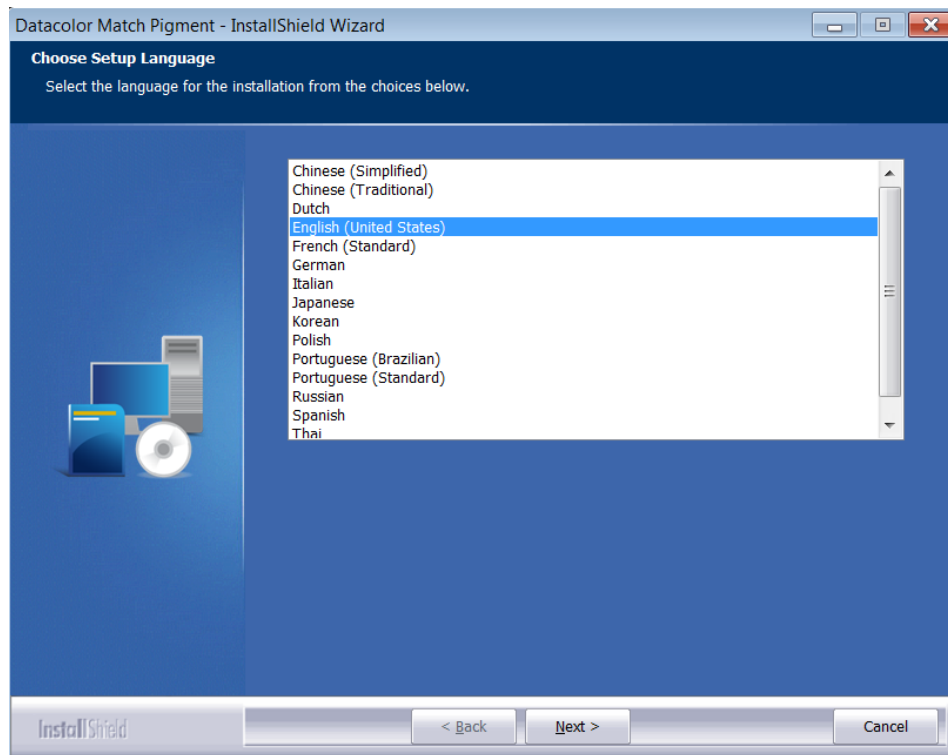
- Click the **Start** button.
- From the Start menu, choose **Run**.
- In the Run dialog box, type **D:\MENU** and click **OK**.

**NOTE**

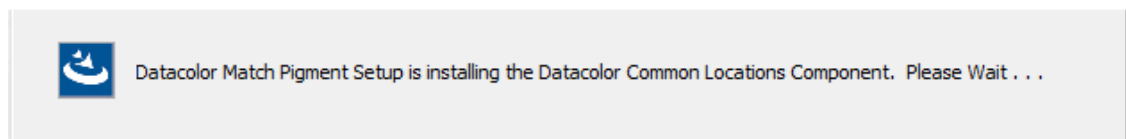
If your mounted ISO drive is a letter other than D, use that letter in the dialog box.

2. Click on **Install Datacolor MATCH<sup>PIGMENT</sup>**.

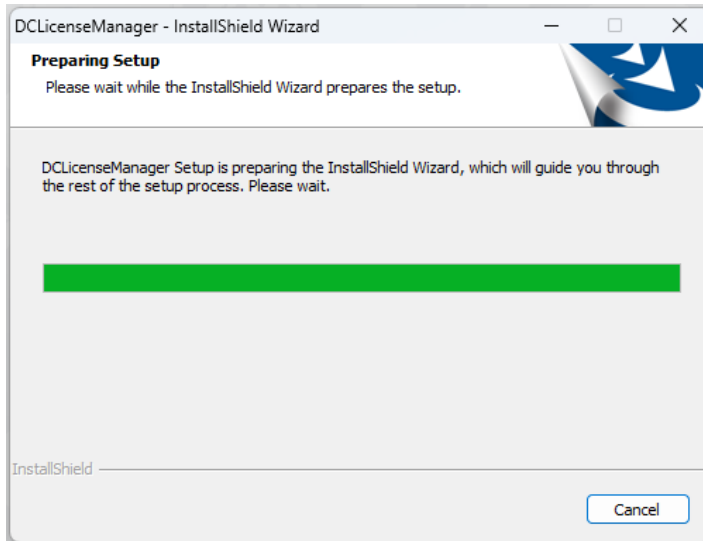
The Datacolor MATCH<sup>PIGMENT</sup> installation will prompt you to select a language:



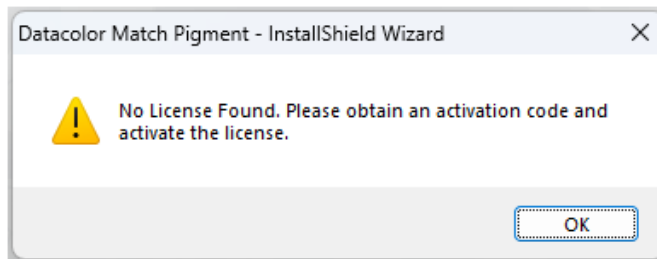
3. Select the appropriate language and click **Next**. The Common Locations and DCLicenseManager components will now install.





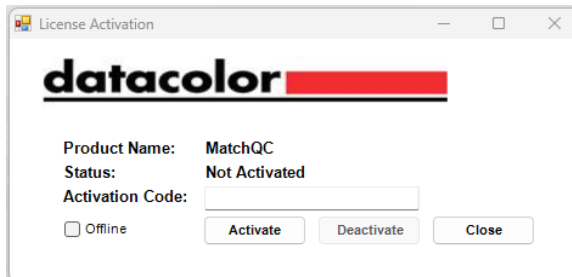


4. The software will detect that there is no license found.

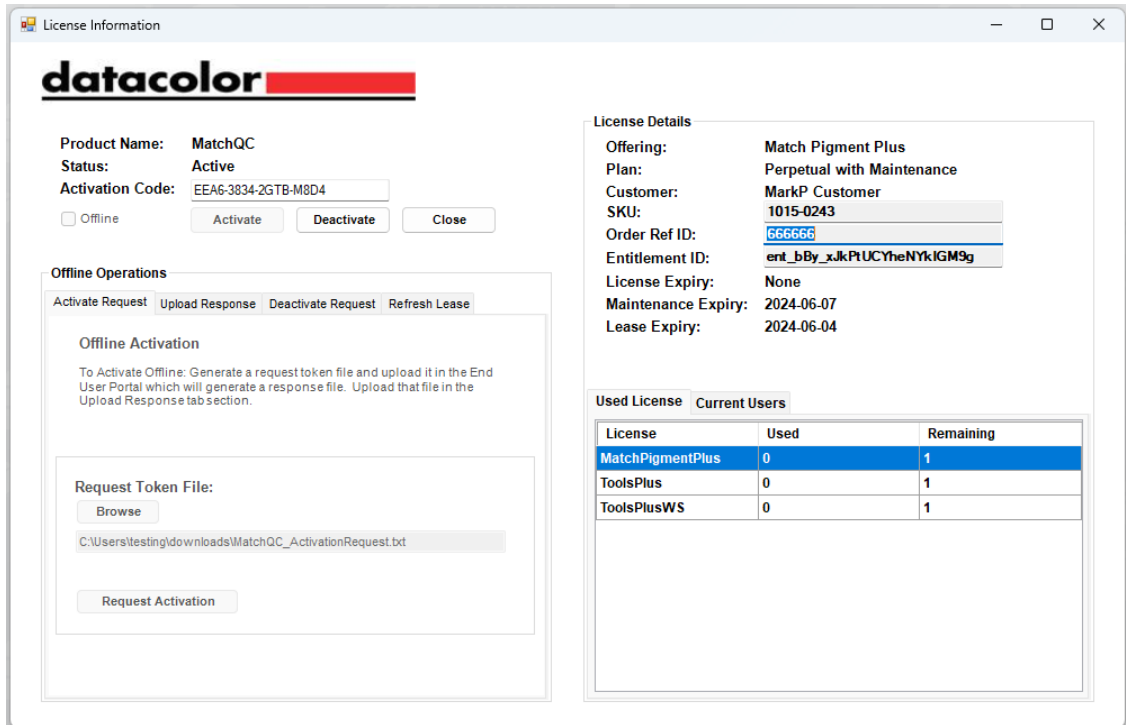


\* If a previous valid license is found in your system, you will not be prompted to activate the license.

5. Click OK and the License Activation window is displayed.

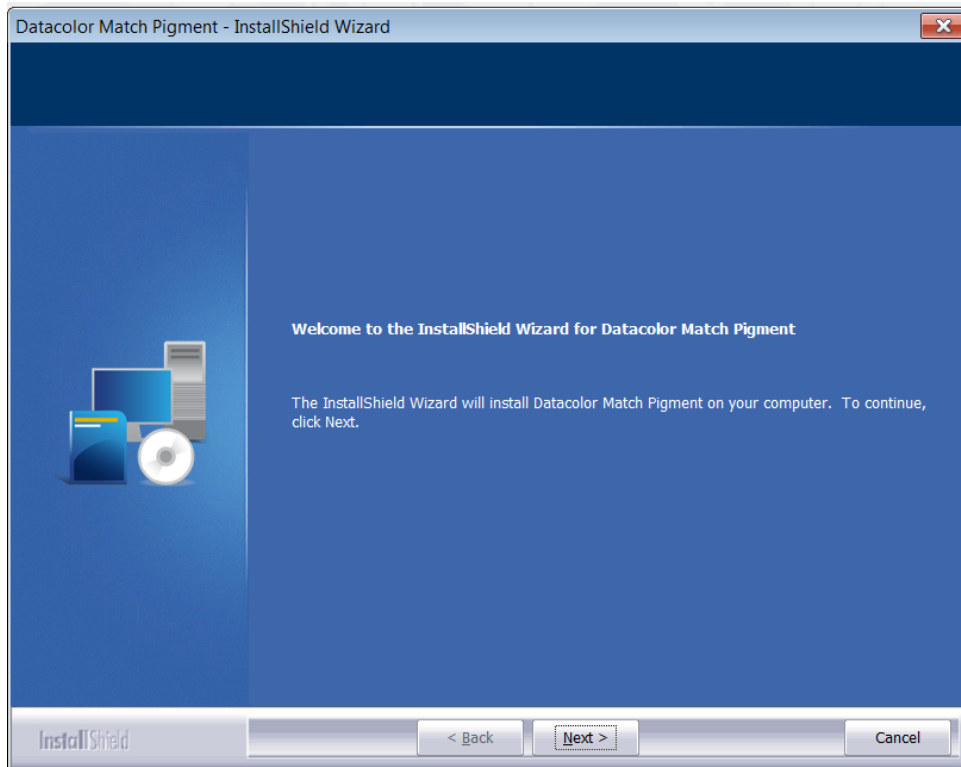


6. Enter an Activation Code and click on "Activate".



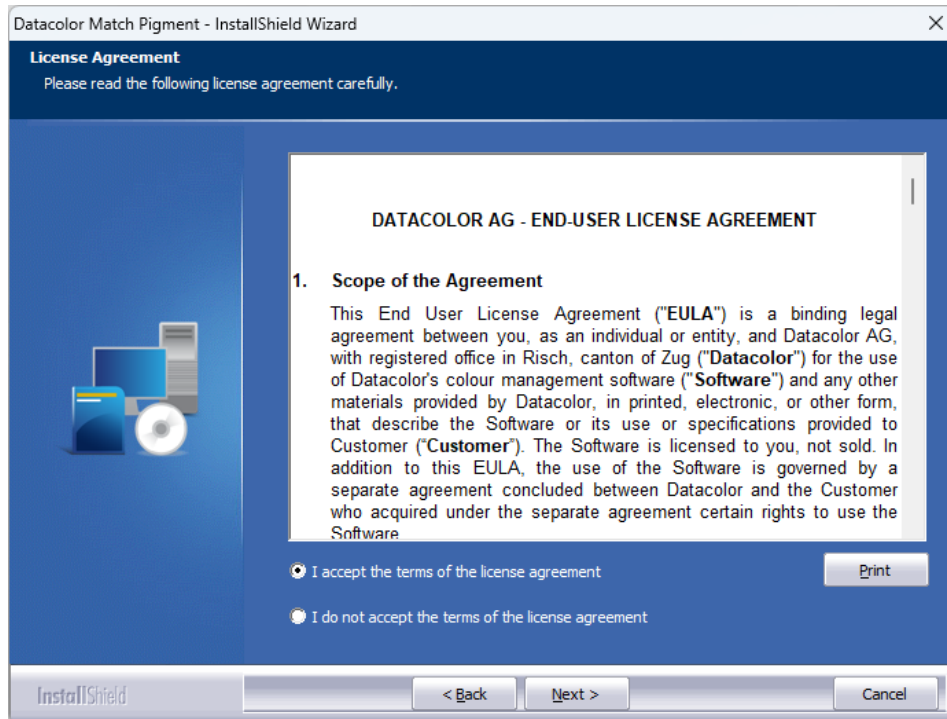
Click **Close** to continue.

7. The installation will begin and then the Installation Wizard will display:



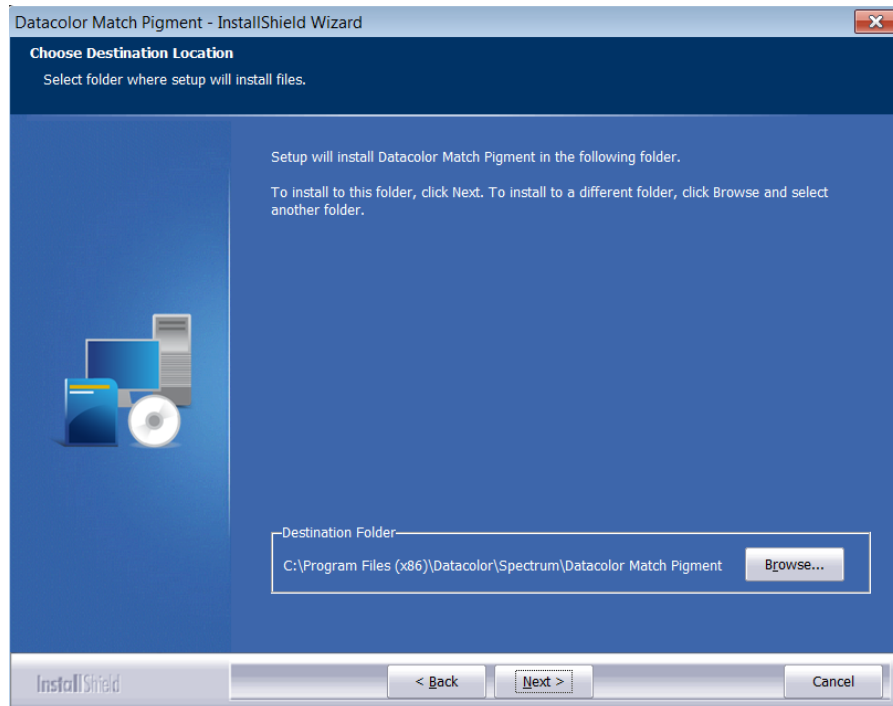
Click **Next** to continue.

8. A software license agreement is displayed:



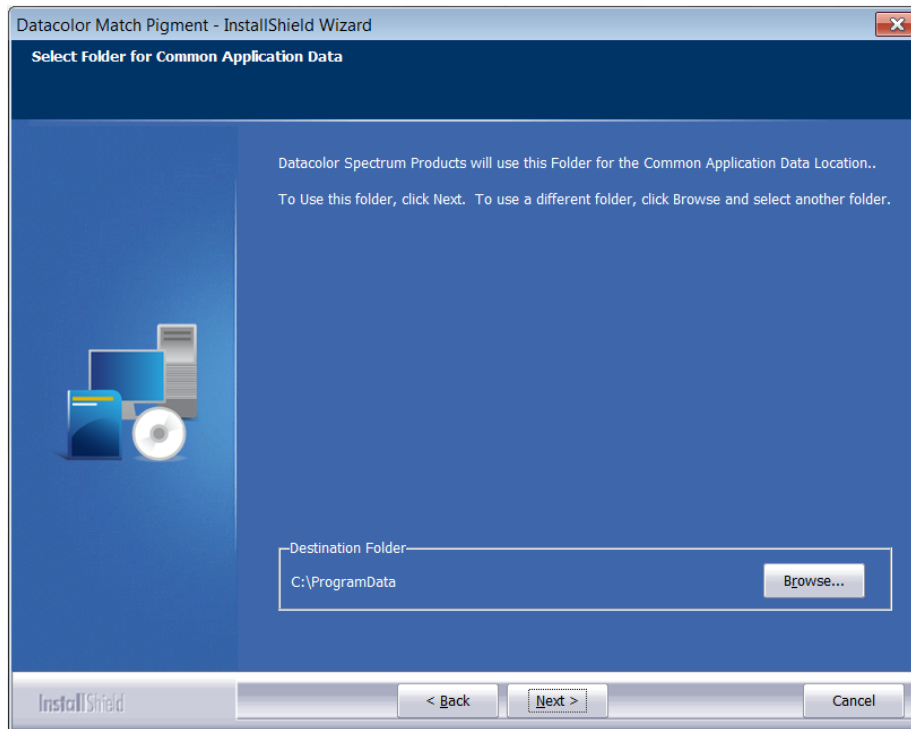
9. To continue with the installation, you must accept the agreement and click on Next.

10. The program confirms the folder location for Datacolor MATCH<sup>PIGMENT</sup>:



- To select a different location for programs, click **Browse**.
- To accept the default, click **Next**.

11. The installation confirms the location for the **Common Applications Data** location.



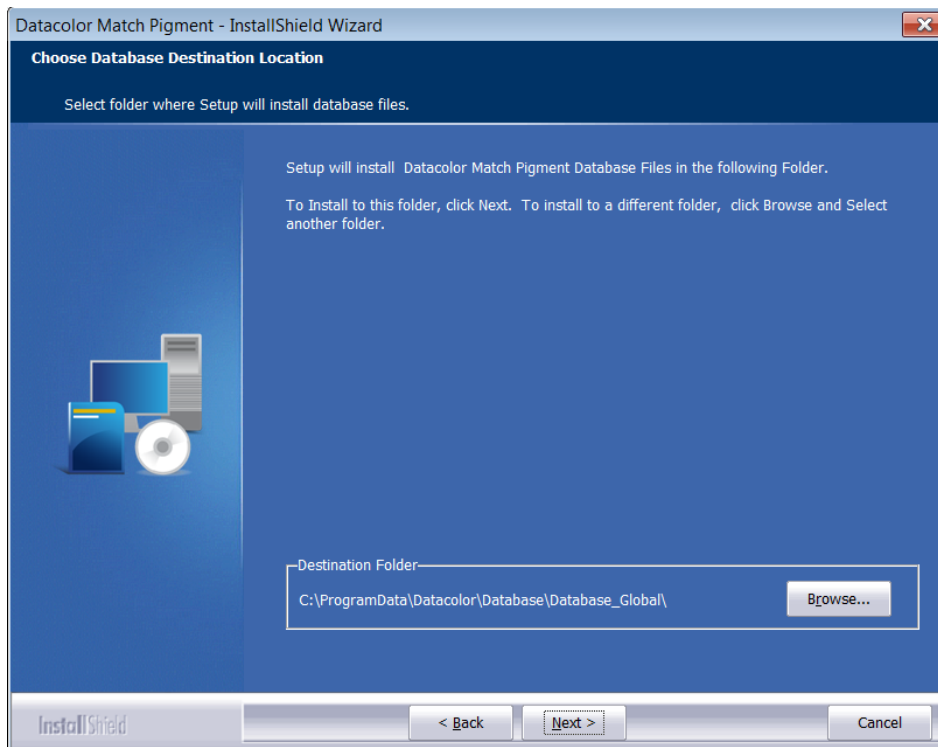
The common applications location is: **C:\ProgramData**.

**You should accept the default locations unless otherwise directed by Datacolor applications.**

Click **Next** to accept the default locations.

### **Select Database Location**

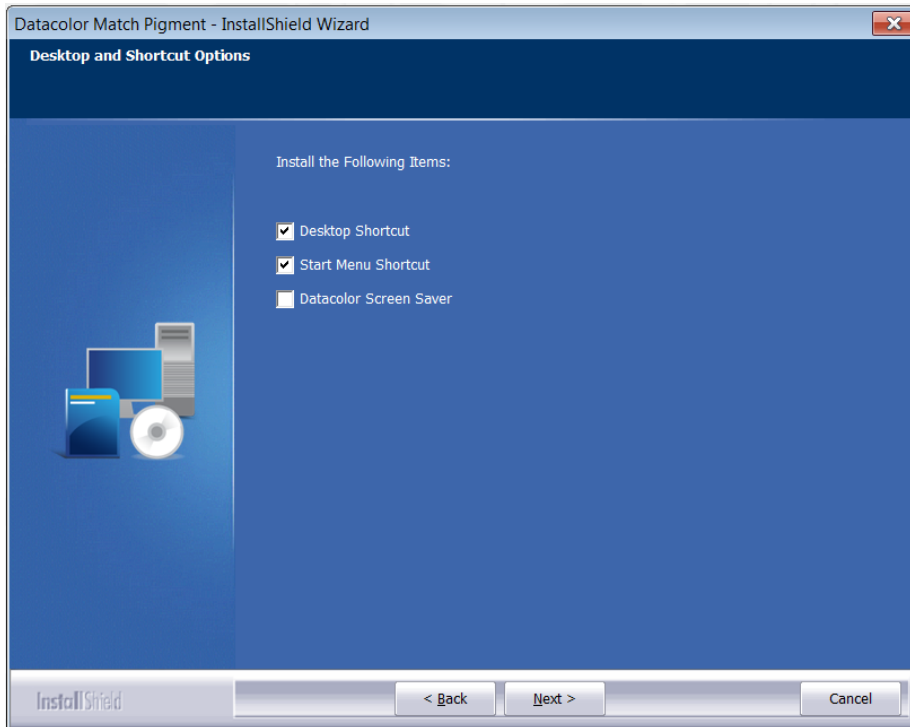
The installation confirms the folder location for the Datacolor MATCH PIGMENT **database** files.



- To select a different folder for the database, click **Browse**.

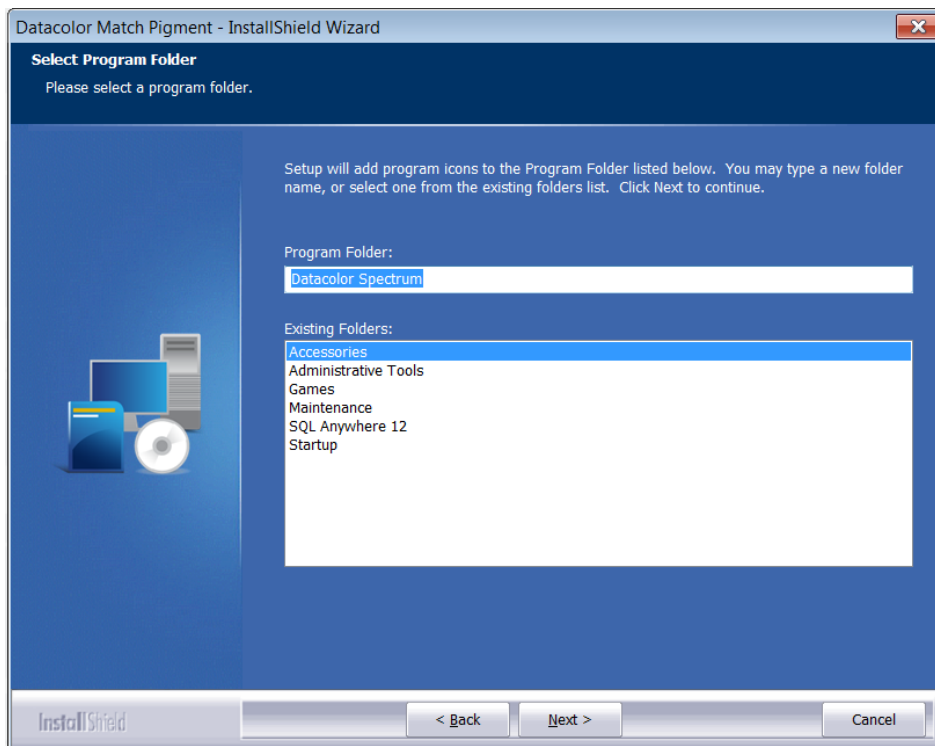
The database location is: **C:\ProgramData\Datacolor\Database\Database\_Global\**

## 12. Desktop and Shortcut Options.



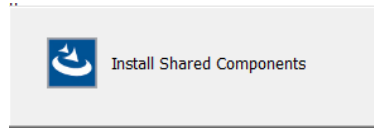
Click **Next** to continue.

## 13. Program Folder Selection

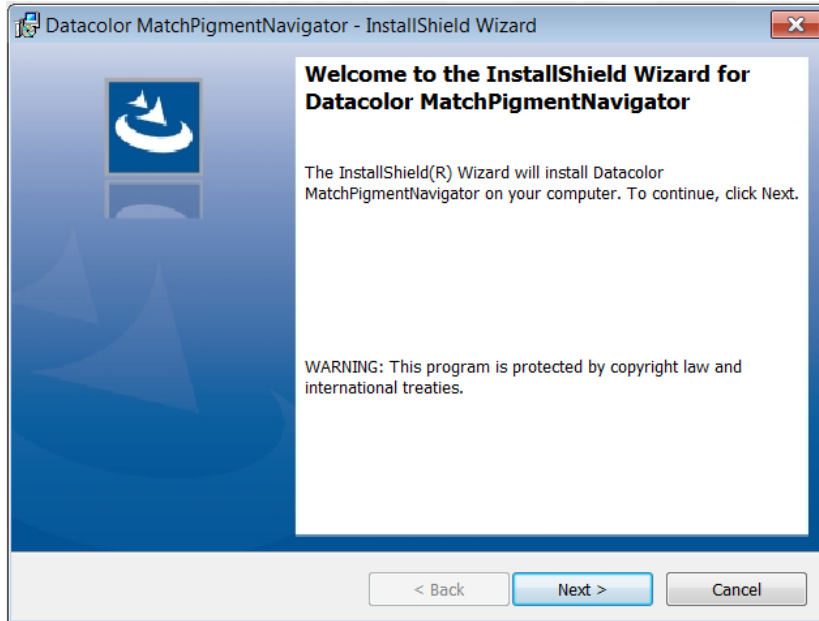


Click **Next** to continue.

14. Shared Components will now install.

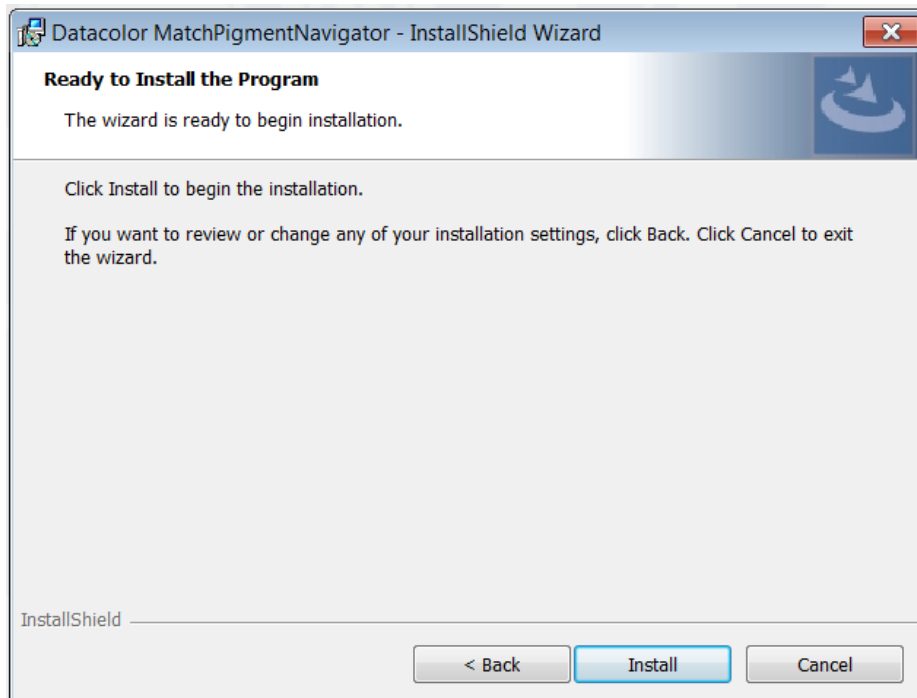


The Datacolor MatchPigmentNavigator window will launch. This component contains elements that are shared with the Datacolor TOOLS application. This screen will display:



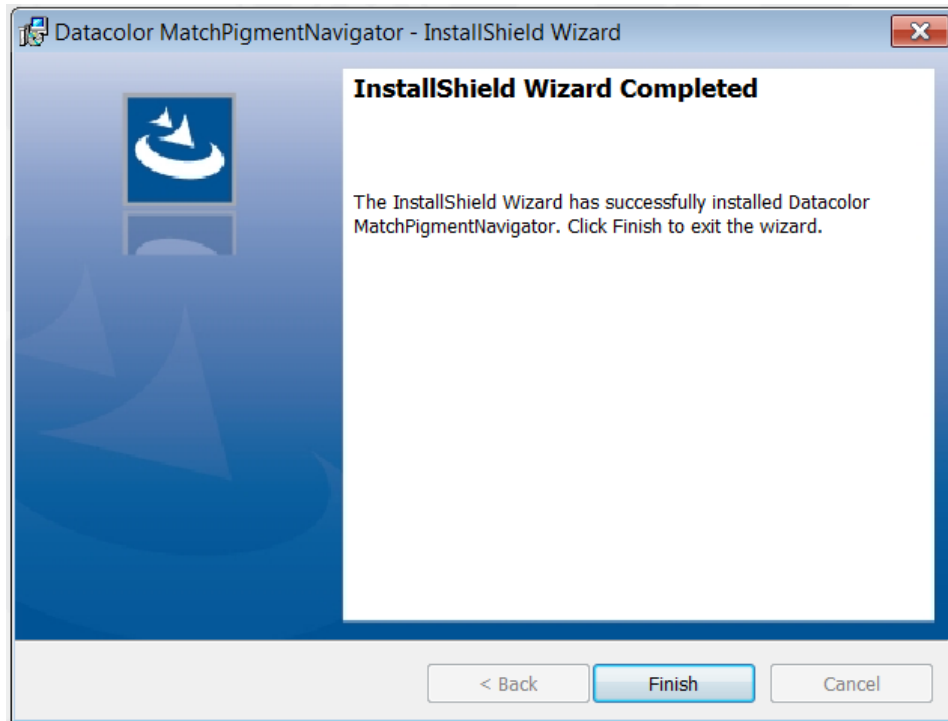
Click **Next** to continue.

15. The MatchPigmentNavigator wizard will continue.



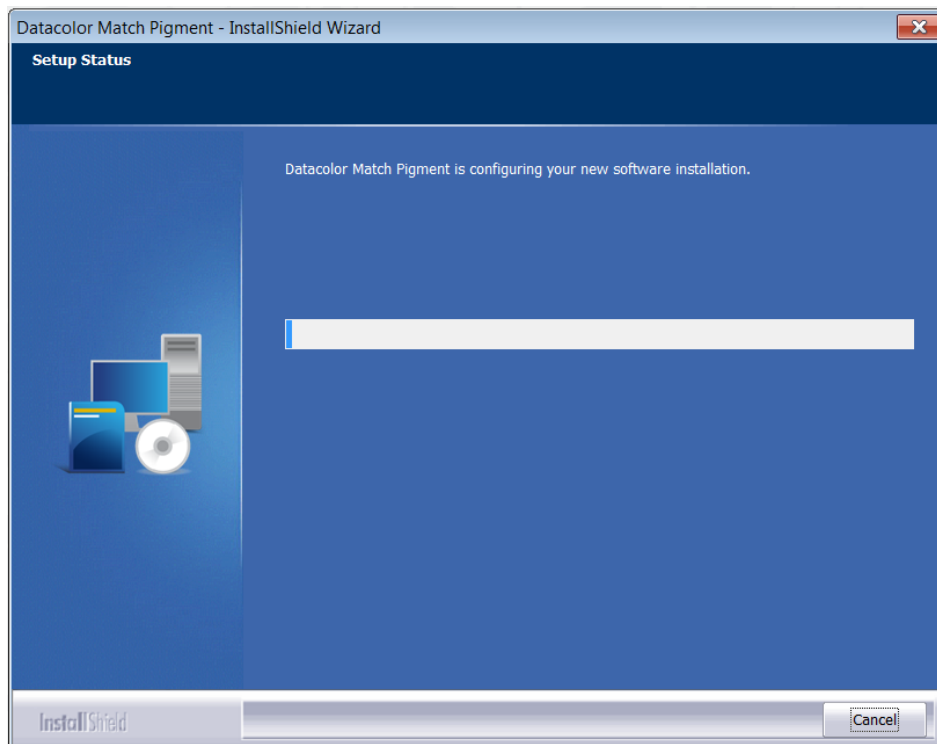
Click **Install** to continue.

16. A progress bar will appear on the window and when it fills, the MatchPigmentNavigator installation will complete.

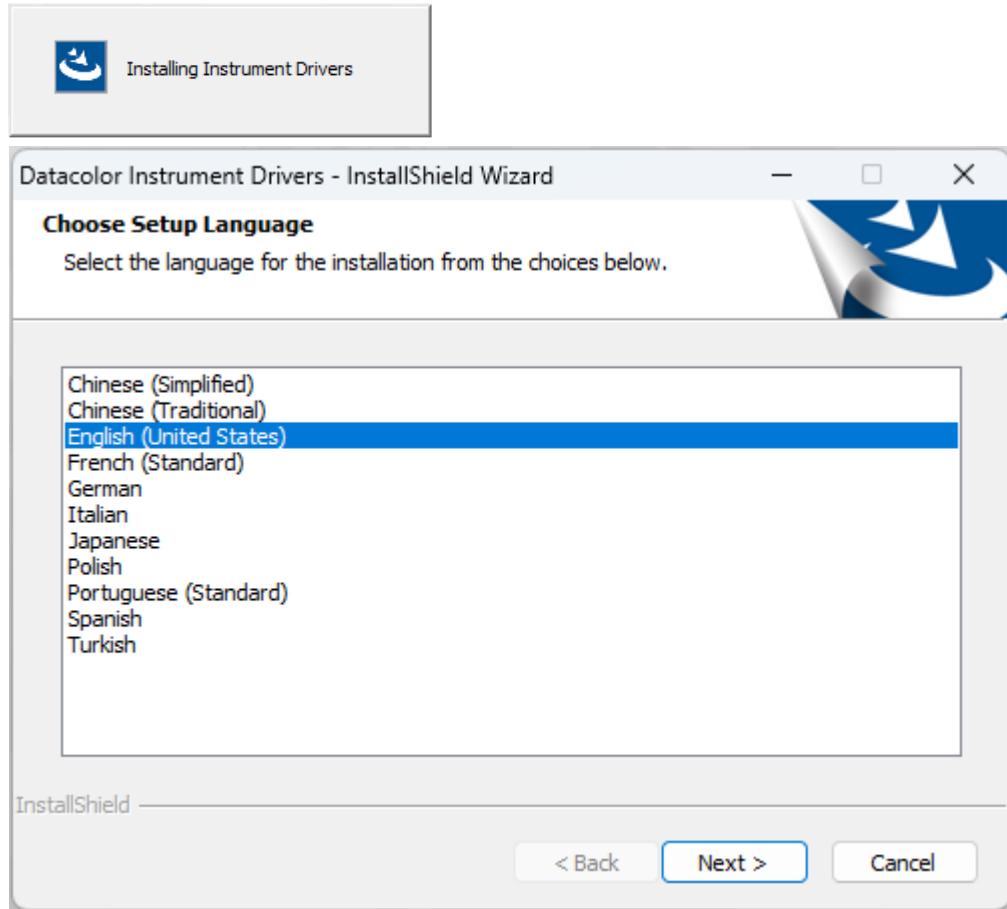


Click **Finish** to continue.

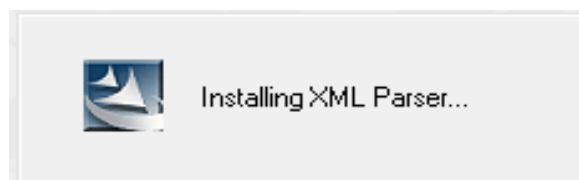
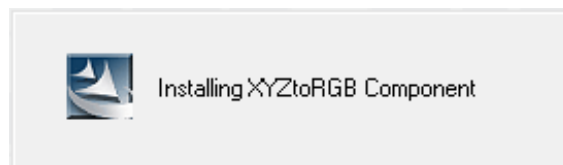
17. The installation will now begin:



18. Installing the Instrument Drivers:

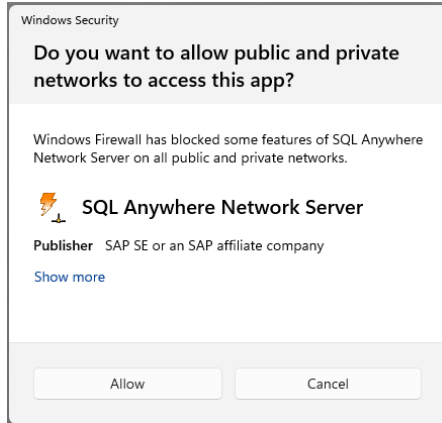


19. Pick the correct language and click on Next then it will continue installing additional components:





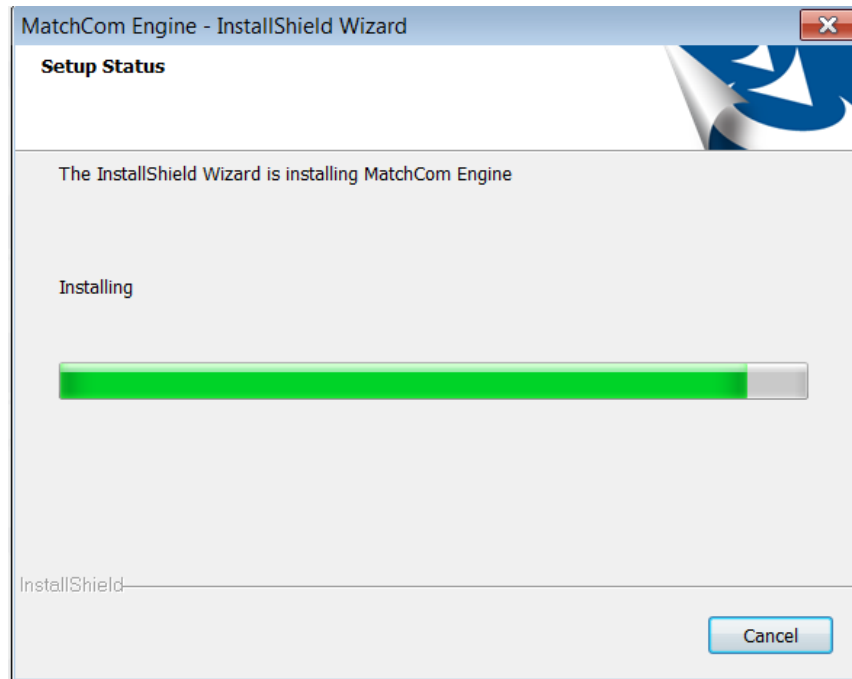
20. It will prompt if you want to allow public and private access to this app.



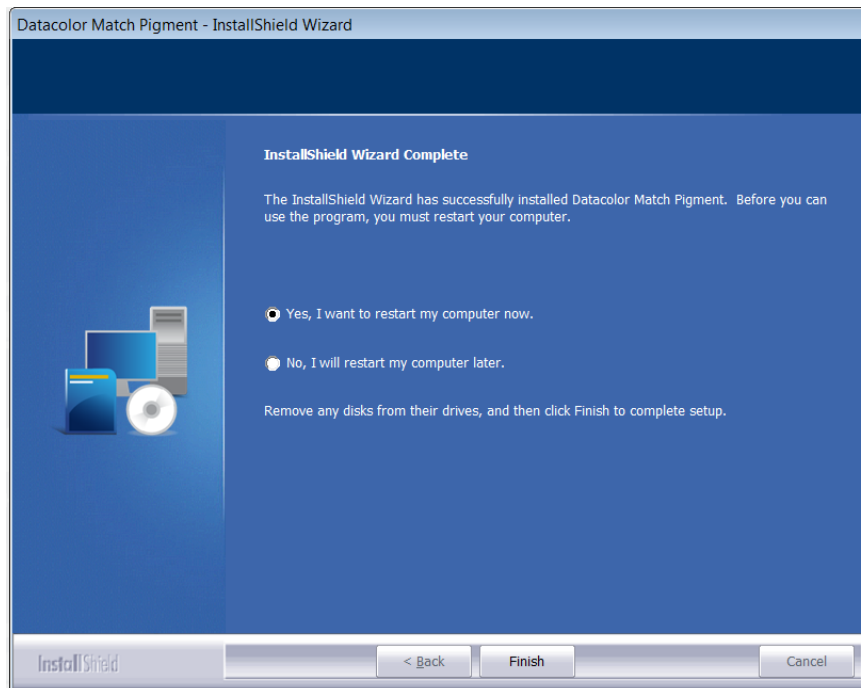
Click on "Allow"



21. The MatchCOM matching engine is installed:

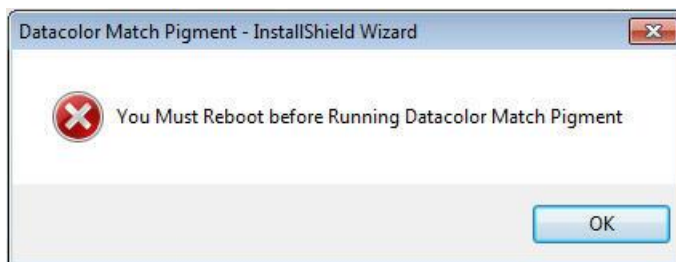


22. After the installation is completed, you will see this screen:.



23. You will be prompted to reboot your computer.

You must reboot before you can start the Datacolor Match Pigment program. If you select No, you will receive the following message:



Click OK to reboot your computer.

# Datacolor TOOLS Installation

---

## Overview

Datacolor TOOLS is companion product to Datacolor MATCH<sup>PIGMENT</sup>. It is contained on a separate ISO image and is loaded under a separate installation process. You should install Datacolor TOOLS after you install Datacolor MATCH<sup>PIGMENT</sup>.

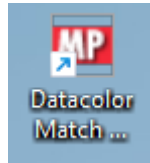
### NOTES

If you are upgrading from a previous version of Datacolor TOOLS, you should backup the data on the TOOLS desktop, and any customized files such as customized form files. *See also Datacolor TOOLS User's Guide, Appendix, File Backup for a list of the relevant files.*

---

## Starting Datacolor MATCH<sup>PIGMENT</sup>

1. To start Datacolor MATCH<sup>PIGMENT</sup>, click on the Datacolor MATCH<sup>PIGMENT</sup> icon on your desktop:

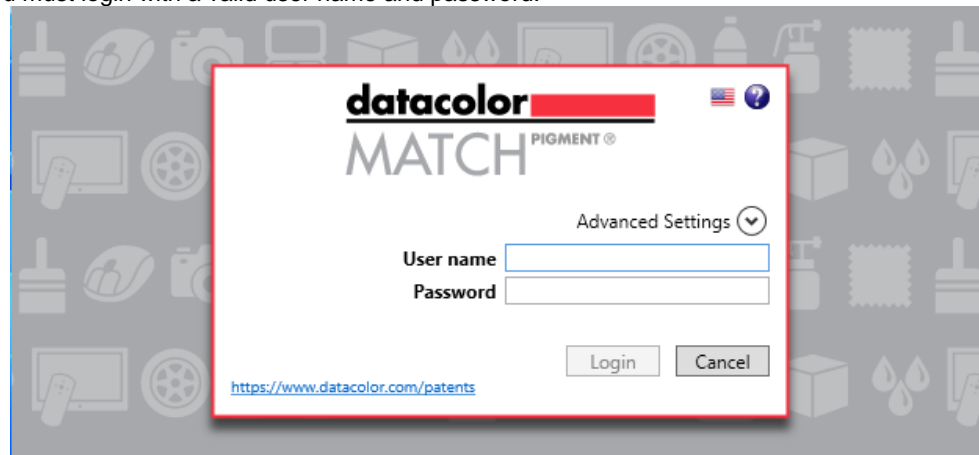


### NOTE

You can also start by clicking **Start/Programs/Datacolor Spectrum/Datacolor MATCH<sup>PIGMENT</sup>**.

2. The login window is displayed:

You must login with a valid user name and password.



- The default user name is “**user**”.
- The default password is “**CC3**”.
- Under Advanced Settings is an option to use a DSN other than the default, if you have created additional Match Pigment databases. The only option for first-time users will be CC2000\_DB.

When the login is successful, the Data Navigator and the Formula Central program windows will open.

### NOTES

User names and passwords are not case sensitive.

The default user and password can be changed. *See also Datacolor MATCH<sup>PIGMENT</sup> User's Guide, Admin for instructions to change the login and password.*

You can customize the program modules automatically opened for each user. *See also Datacolor MATCH<sup>PIGMENT</sup> User's Guide, Admin for instructions to customize this display.*