

Datacolor MONITOR Installation Guide

Datacolor MONITOR Stand-Alone Installation Guide

(June, 2024)

All efforts have been made to ensure the accuracy of the information presented in this format. However, should any errors be detected, Datacolor appreciates your efforts to notify us of these oversights.

Changes are periodically made to this information and are incorporated into forthcoming versions. Datacolor reserves the right to make improvements and/or changes in the product(s) and/or program(s) described in this material at any time.

© 2024 Datacolor. Datacolor, SPECTRUM and other Datacolor product trademarks are the property of Datacolor.

Microsoft and Windows are either registered trademarks of Microsoft Corporation in the United States and/or other countries.

To obtain information on local agents, sales or support contact, visit our website at <https://www.datacolor.com/contact/business-solutions-contacts/>.

Support Questions? If you need help with a Datacolor product, please contact support at: <http://industrial.datacolor.com/support>.

Committed to Excellence. Dedicated to Quality. Certified to ISO 9001 in Manufacturing Centers Worldwide.

Table of Content

- 1 Installation Overview.....4**
 - 1.1 System Requirements.....4
 - 1.2 Datacolor MONITOR Installation set.....4
 - 1.3 Sybase Installation Options4
- 2 Installing MONITOR on a Clean System (non-upgrade case)5**
 - 2.1 Standalone System.....5
 - 2.2 Local Area Network (LAN)5
 - 2.2.1 *Server Installation*5
 - 2.2.2 *Client Installation*5
- 3 STEP-By-Step installation of MONITOR (Standalone System)6**

1 Installation Overview

This document describes the installation of Datacolor Software to your computer's hard disk, follow these instructions to install our software on your computer.

Before you begin the installation, you should have all installation discs, and Microsoft Windows* should be properly installed on your computer.

1.1 System Requirements

Follow the link below for information on the system requirements:

<https://www.datacolor.com/business-solutions/downloads>

Please contact Datacolor for Terminal Server hardware and software requirements.

1.2 Datacolor MONITOR Installation set

There are 2 ISO images for installing Sybase and MONITOR.

1. Sybase ISO image
2. MONITOR Application ISO image

Important, Before You Begin! *You must have Administrator Rights to install this software and you must have installed Sybase first!*

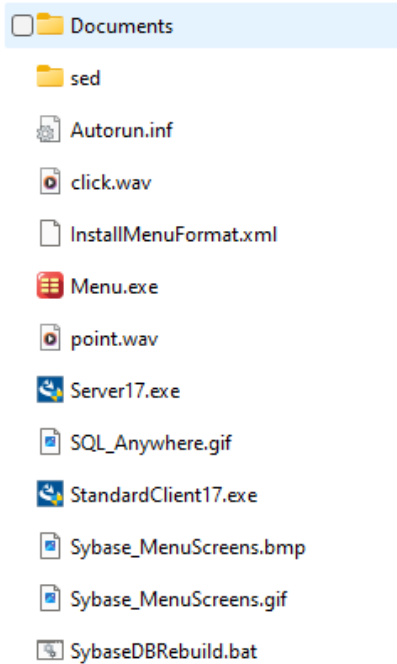
1.3 Sybase Installation Options

There are 2 different Sybase Installation options on the Sybase ISO Image:

1. **Standard Client Installation** – This is a silent install that will not ask which components to install or ask about the number of licensed users. This should be used for all stand-alone PC systems as well as for client installations for PCs on a traditional LAN.
2. **Install Sybase Server** – This installation will ask which components to install and also allow you to set the number of licensed users. This should be used for the server installation on a traditional LAN and for a terminal server application.

Both of the above installations are basically the same. The only difference is the Standard Client is a silent install while the Sybase Server install asks questions. For example, the Server Install will allow you to set the number of users.

Sybase ISO Image – Directory Structure



2 Installing MONITOR on a Clean System (non-upgrade case)

2.1 Standalone System

This is a dedicated, single-user system that does not share the database. The Sybase database server and the Datacolor applications software is installed on the same system. To install on a standalone system, follow these steps:

1. Mount the Sybase ISO image, select Standard Client Installation from the installation menu and follow the prompts. For step-by-step instructions, see the document *SybaseInstallationGuide_REV_14.pdf*.
2. After Sybase has been installed, mount the **MONITOR** ISO image and select the option to install Datacolor **MONITOR**.

2.2 Local Area Network (LAN)

This is a group of systems that share a common database. The Datacolor application software is installed on each client machine, and the database is located on a server that can be accessed by all of the client computers.

2.2.1 Server Installation

This installation procedure is performed on the server computer.

3. Mount the **Sybase ISO image**, select **Install Sybase Server** from the installation menu and follow the prompts. *For step-by-step instructions see the document SybaseInstallationGuide_REV_14.pdf.*
4. Create a **Windows database service** for the Sybase Adaptive Server program. *For step-by-step instructions, see also Appendix, Sybase Database Service in SybaseInstallationGuide_REV_14.pdf.*

2.2.2 Client Installation

This installation procedure must be repeated for each client computer on the network.

1. Mount the **Sybase ISO image**, select **Standard Client Installation** from the installation menu and follow the prompts. *For step-by-step instructions, see also Detailed Installation Instructions, Sybase Client Installation in SybaseInstallationGuide_REV_14.pdf.*
2. Install **Datacolor Monitor** on each client computer. For step-by-step instructions, see also the Installation Instructions for the specific application.
3. Modify the **ODBC connection** on each client computer. This directs the program to look for the databases on the network. *For step-by-step instructions, see also Appendix, ODBC Connection in SybaseInstallationGuide_REV_14.pdf..*

3 STEP-By-Step installation of MONITOR (Standalone System)

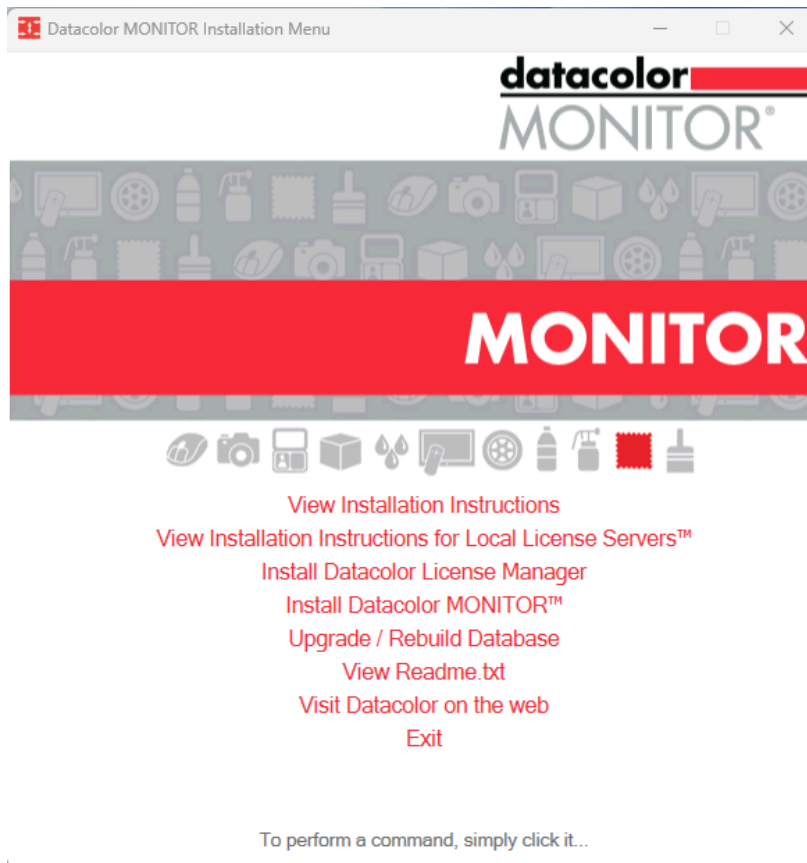
To install your software, do the following:

1. Start Windows.
2. Mount the product ISO image and run the Menu.exe.
3. The main installation menu should appear

If you do not see the menu window, do the following:

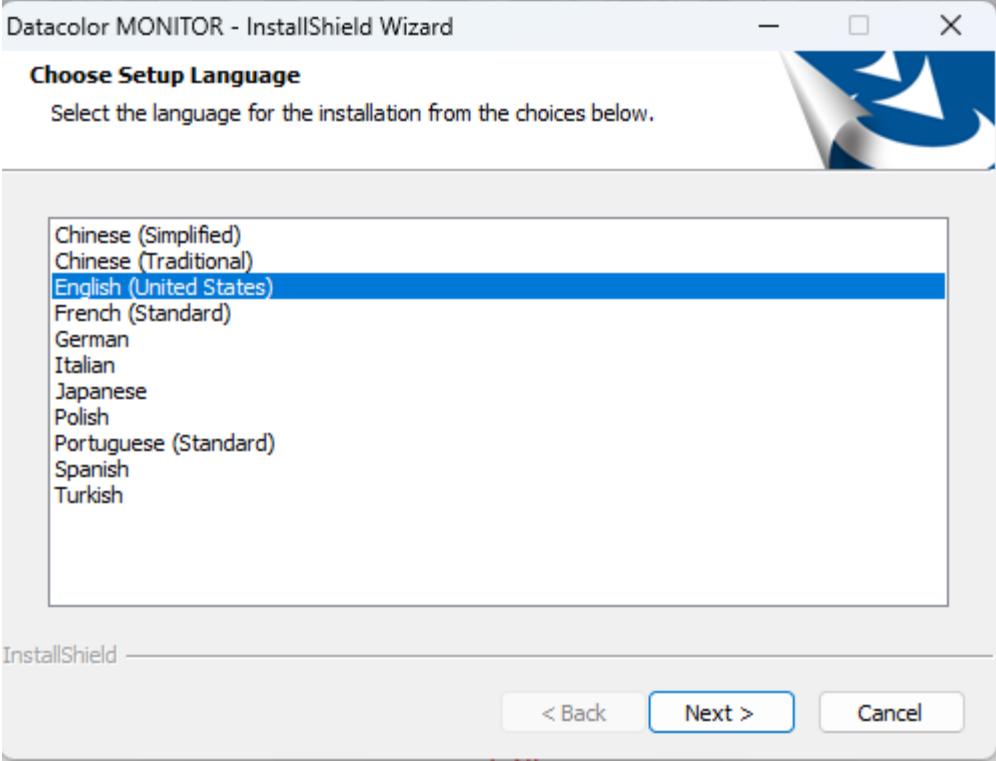
Click the **Start** button From the start menu, choose **Run...**

in the Run dialog box, type **D: MENU** and click OK. (If your ISO Image Drive is a letter other than D, use that letter in the dialog box.)

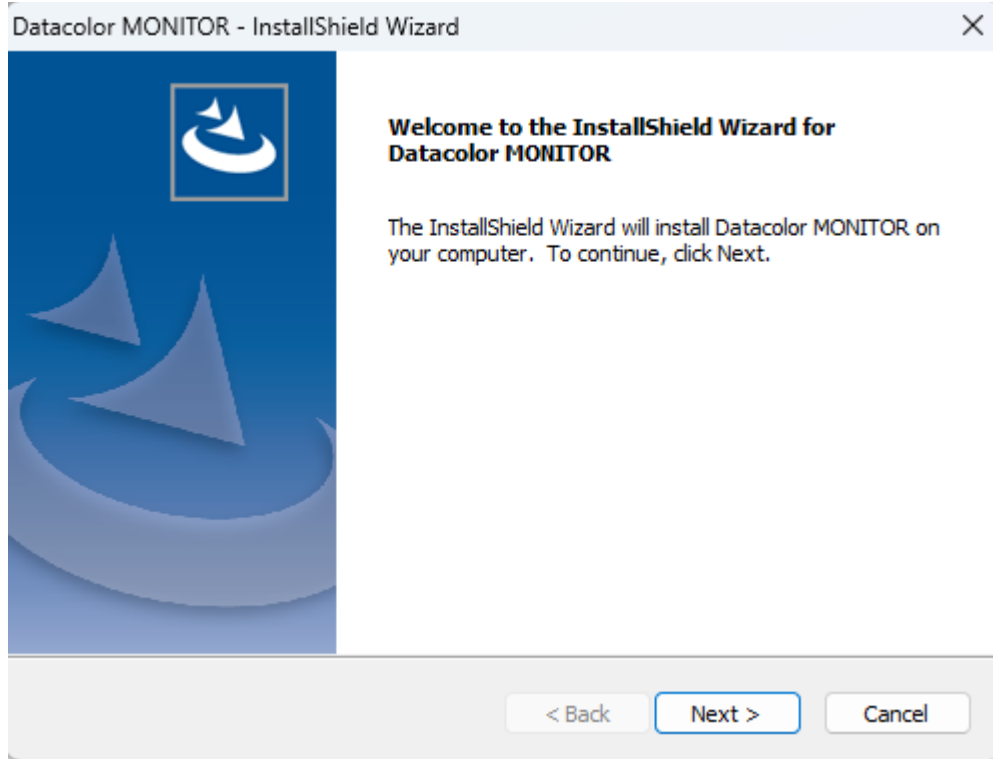


When the Main Installation Menu is displayed, choose “**Install Datacolor MONITOR**” The Datacolor MONITOR installation will guide you through installing Datacolor MONITOR on your computer

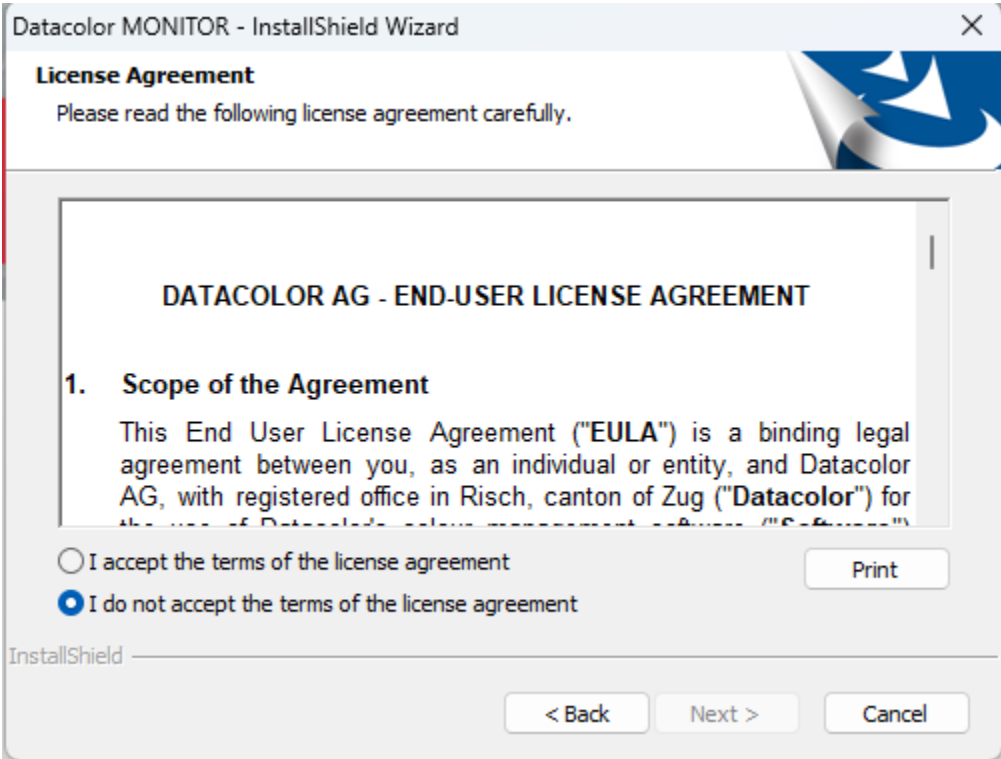
Select a language from the list box.(Language include Chinese (simplified), Chinese (traditional), English, French (standard), German, Italian, Japanese, Polish, Portuguese (standard), Spanish.and Turkish)



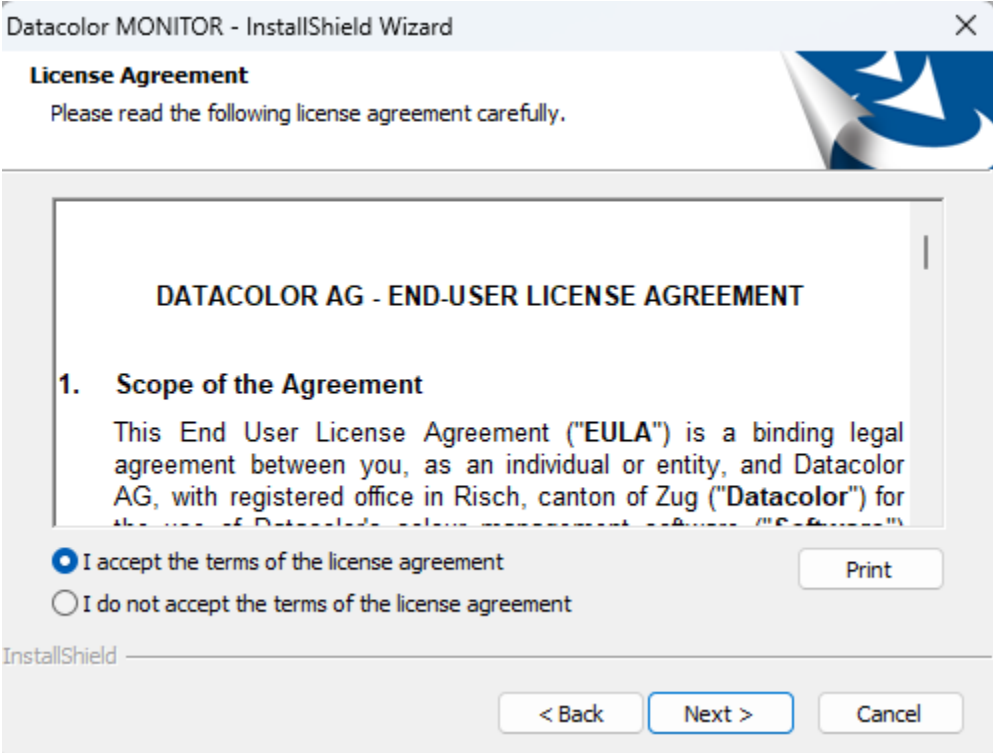
Click **Next**. The installation wizard will start - follow the prompts to install Datacolor MONITOR on your computer.



Next the License Agreement is Displayed:

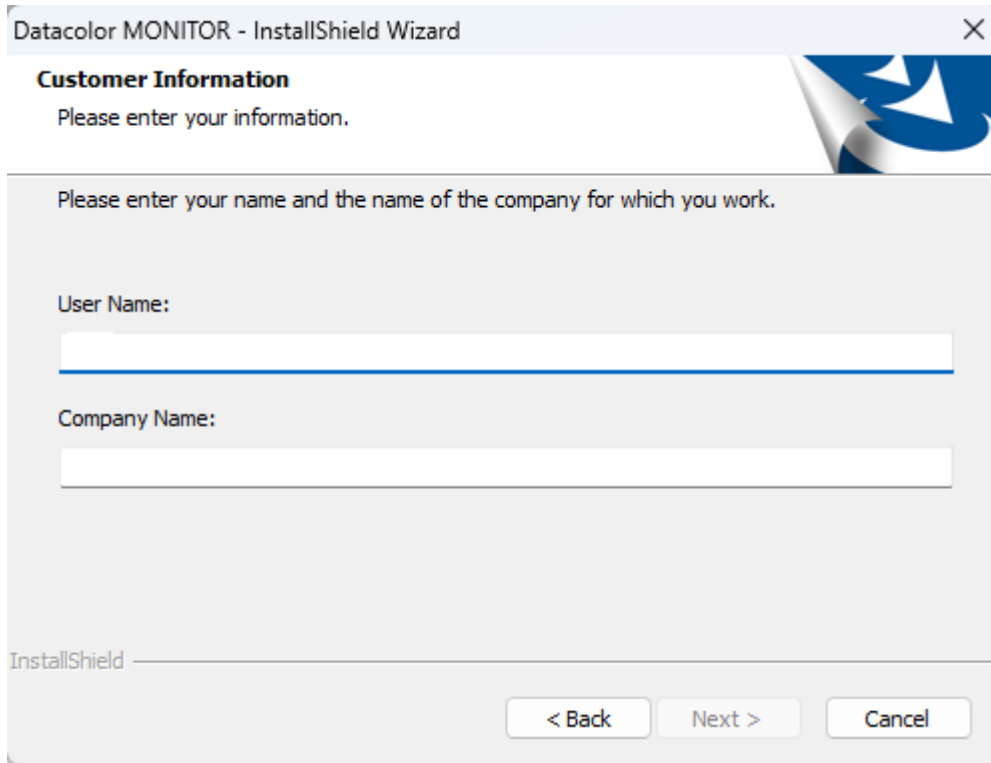


Accept the Terms and the Next button will be available:

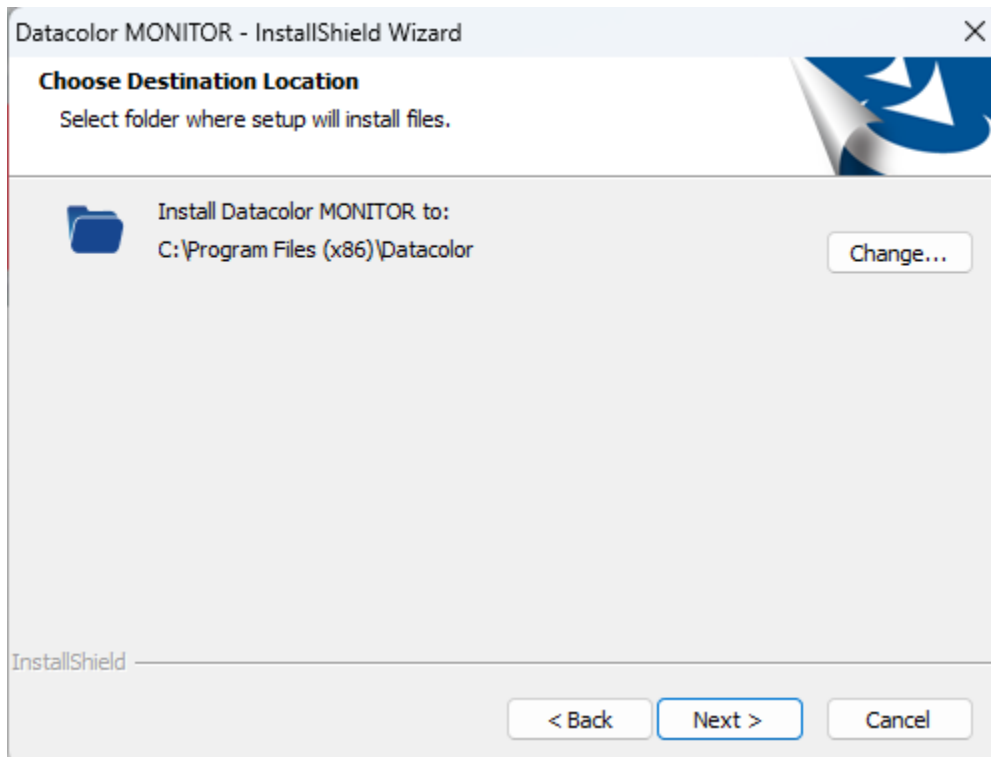


Press the Next Button to continue to install Datacolor MONITOR.

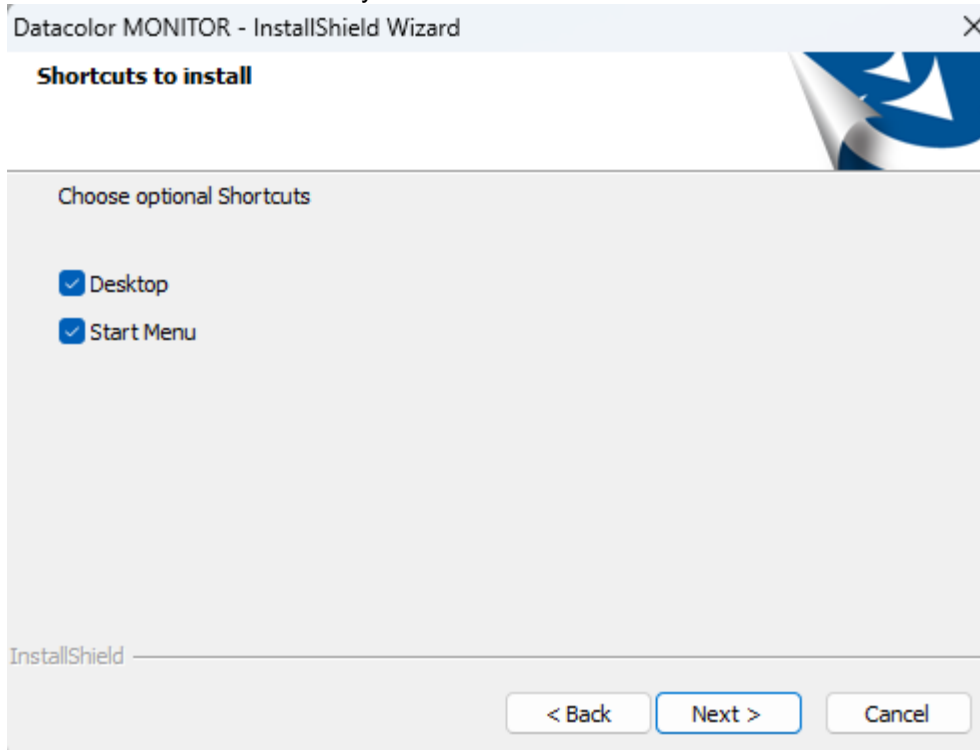
The installation will ask for the User Name and Company Name:



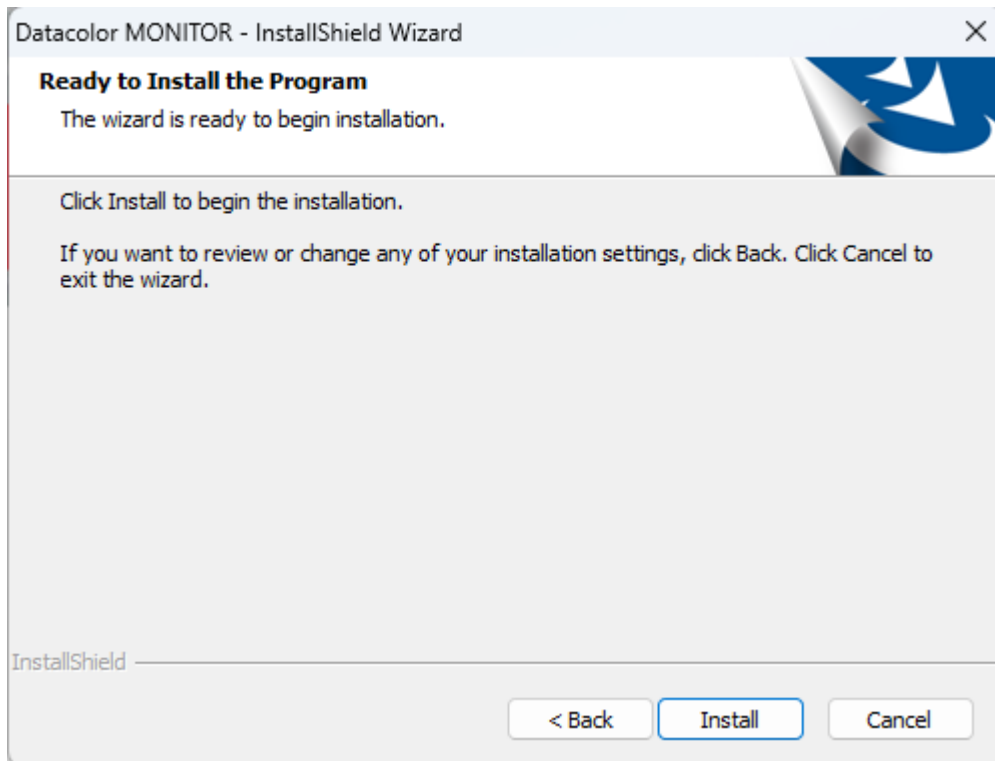
Enter the User Name and the Company name and the Next button will become available, press Next. Now choose the installation Destination Location. A default will be displayed, If this location is acceptable, press Next or choose the "Change..." button to select another location:



Now the installation will ask if you want to Install Shortcuts.

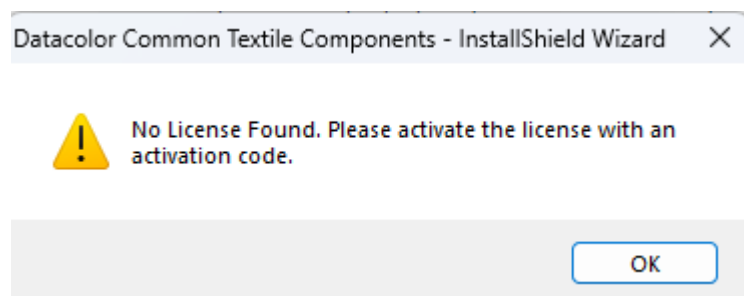
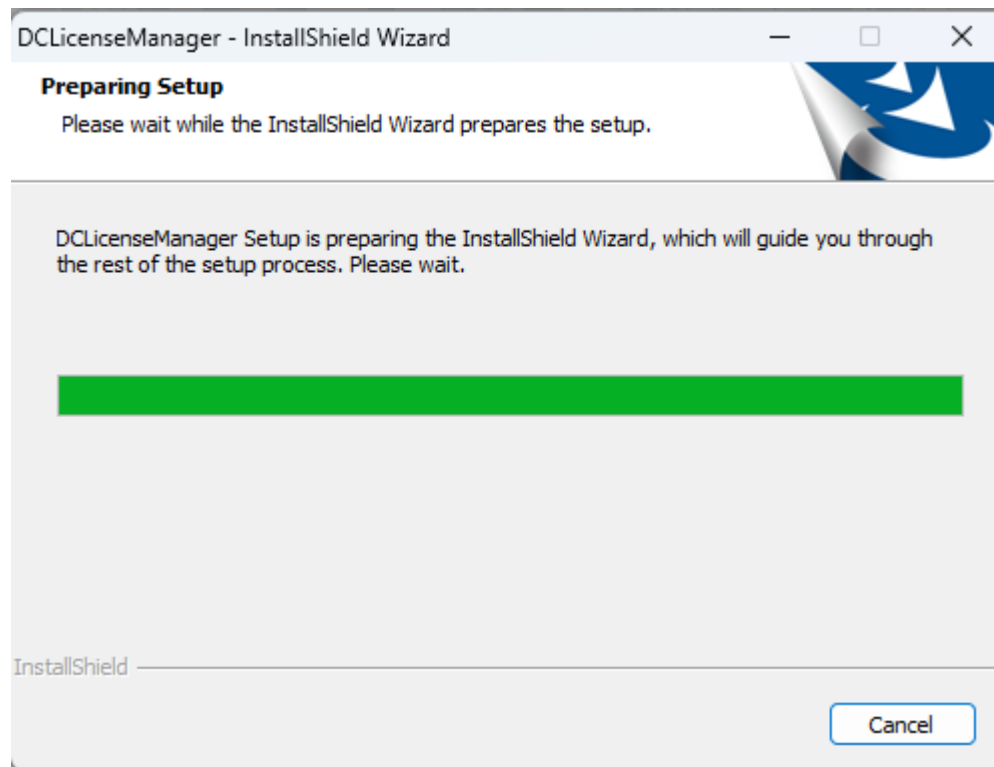
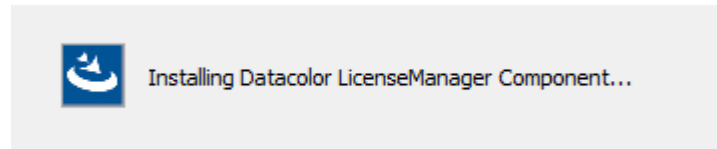


Check / Uncheck the Shortcuts that are desired to be installed then press the Next button.

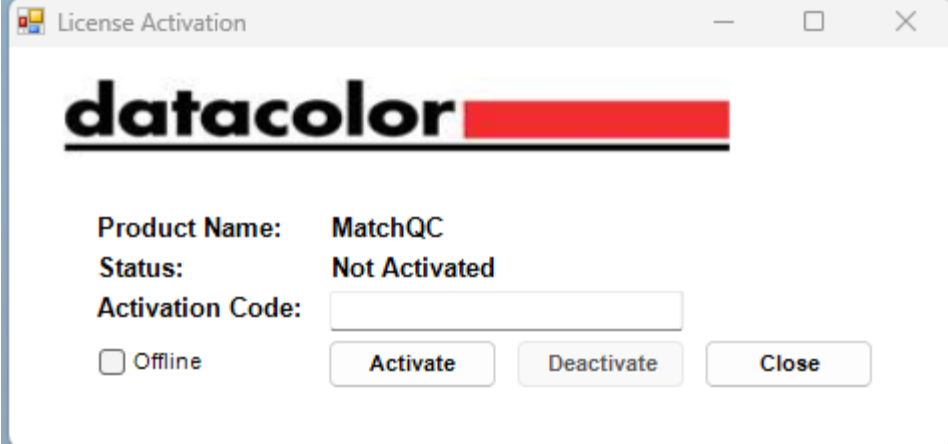


Now the Installation is ready to begin: Press the Install Button to install the Datacolor MONITOR software.

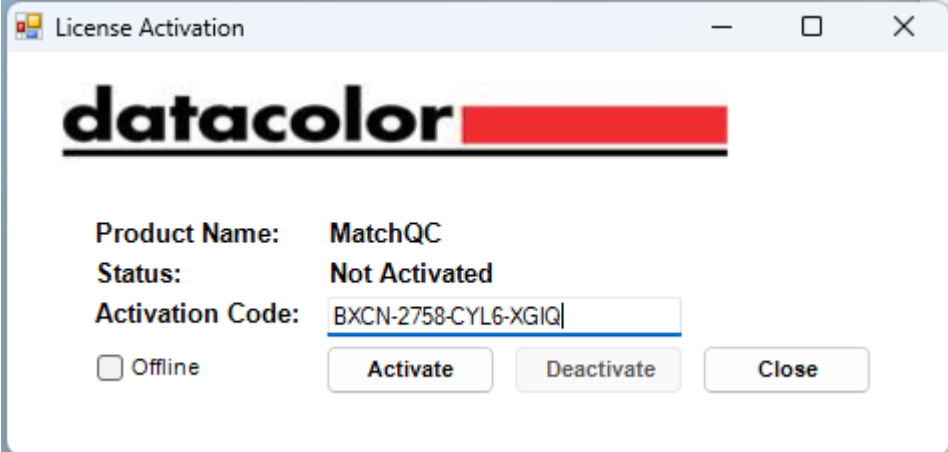
The Datacolor License Manager component will be installed and you will be asked to Activate your software.



If your software is not already licensed, you will see this dialog box. Press the OK button to continue to activate your software. An email will have been sent with your activation code. Use this activation code.



Enter the Activation Code:



Press the Activate button:

License Information

datacolor

Product Name: MatchQC
 Status: Active
 Activation Code: BXCN-2758-CYL6-XGIQ

Offline

Offline Operations

Activate Request | Upload Response | Deactivate Request | Refresh Lease

Offline Activation

To Activate Offline: Generate a request token file and upload it in the End User Portal which will generate a response file. Upload that file in the Upload Response tab section.

Request Token File:

C:\Users\delsol\downloads\MatchQC_ActivationRequest.txt

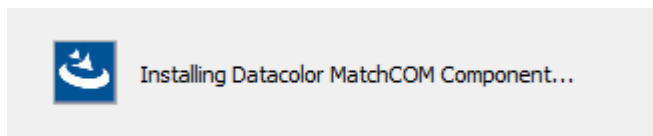
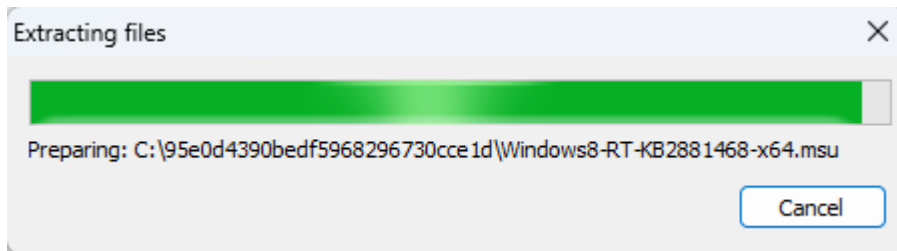
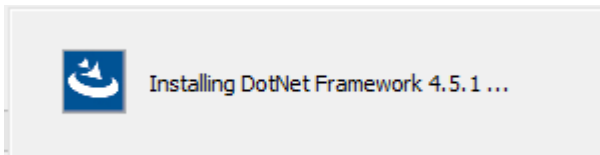
License Details

Offering: Match Textile Plus
 Plan: Perpetual with Maintenance
 Customer: David Elson
 SKU: 1013-1078
 Order Ref ID: 666666
 Entitlement ID: ent_2weyiAKHTE2QiDwUeIS7w
 License Expiry: None
 Maintenance Expiry: 2025-08-19
 Lease Expiry: 2024-07-03

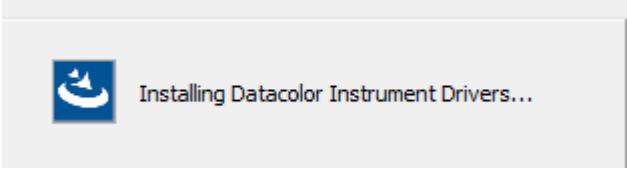
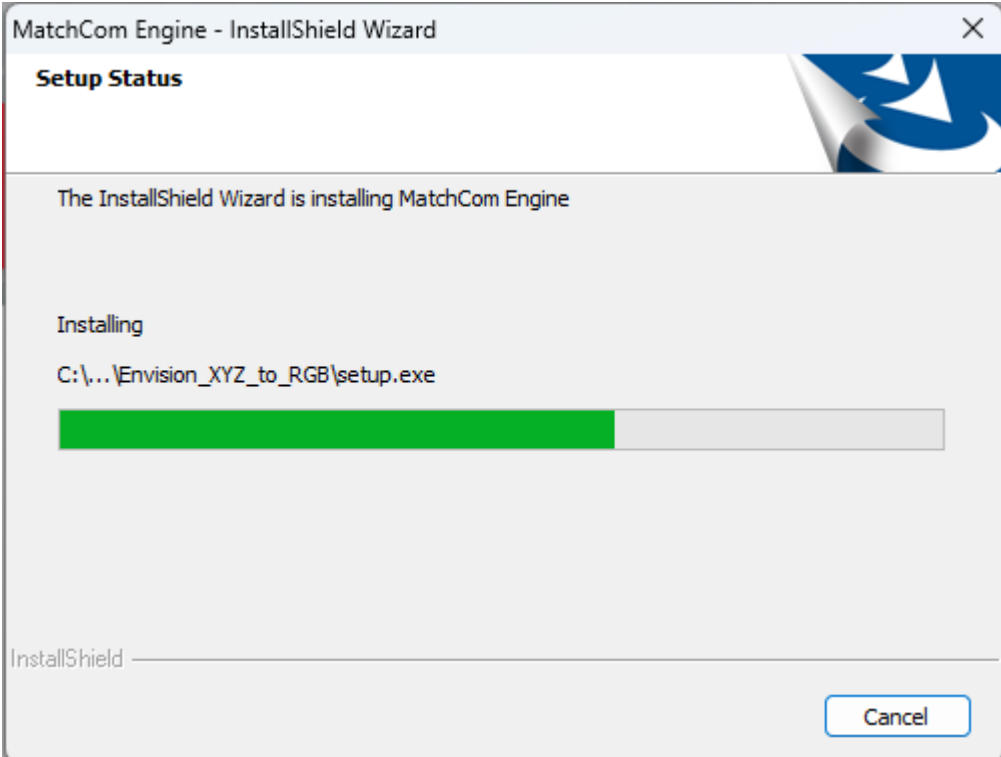
License	Used	Remaining
MatchTextilePlus	0	1
Monitor	0	1
Sort	0	1
ToolsPlus	0	1

Your software has now been activated. Press the Close button to continue with the Software Installation:

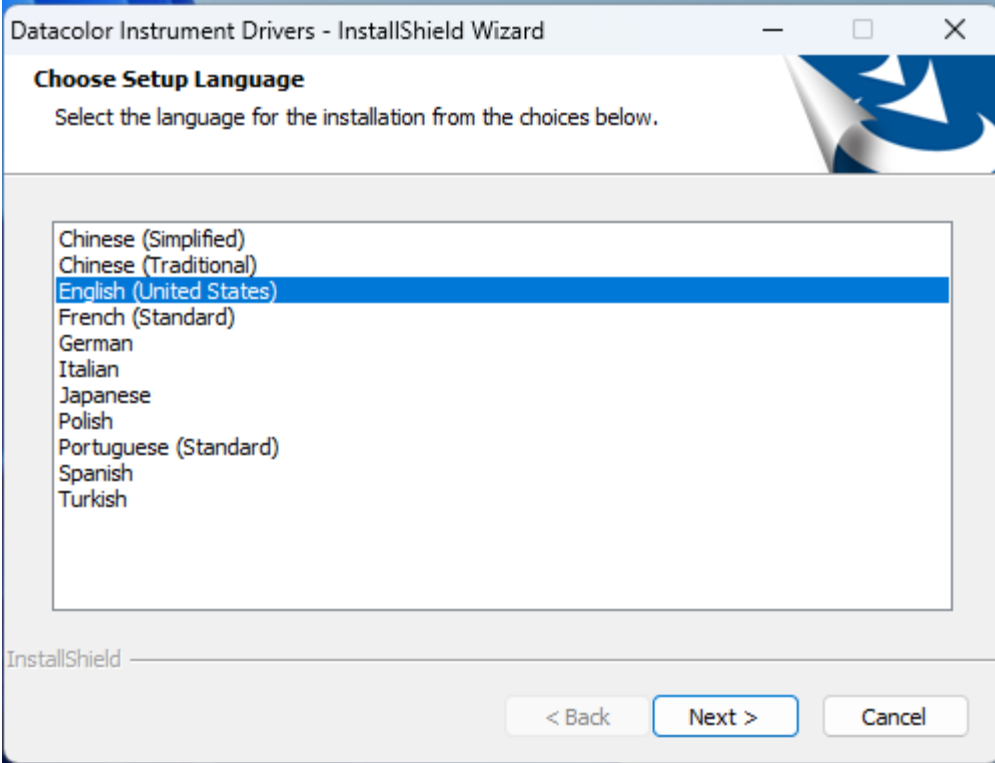
A series of dialog boxes will be displayed as the installation progresses:



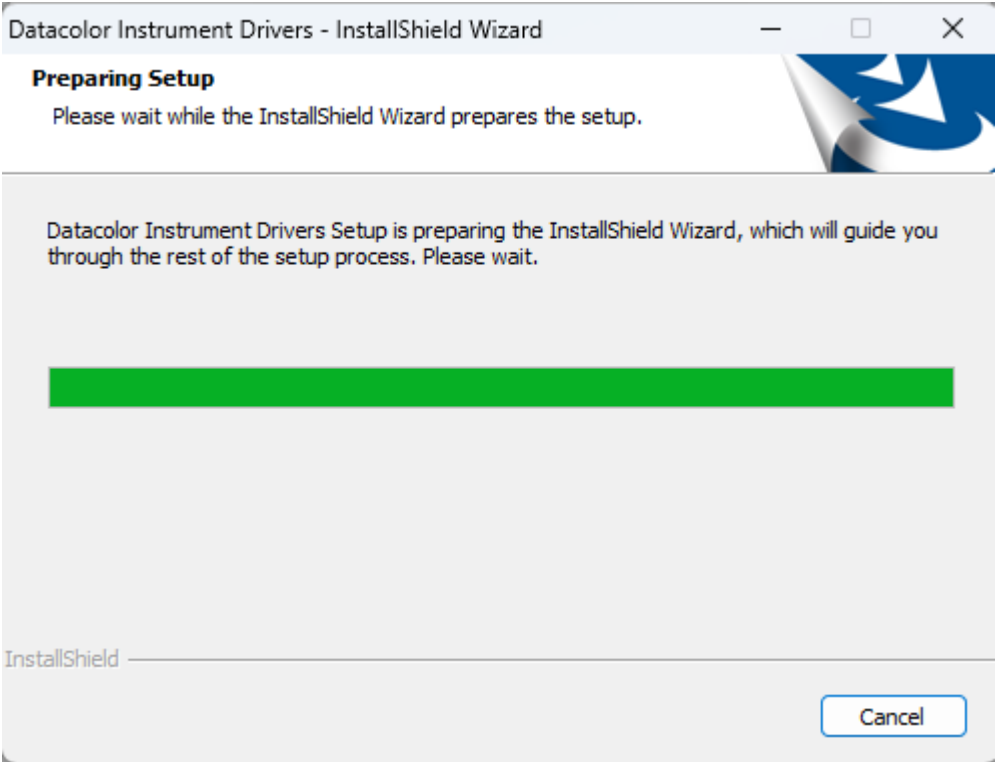
MatchCom will install:



The Instrument Drivers will install



Select the Language for the Instrument Drivers and press the Next button.



A few additional dialogs will be shown:

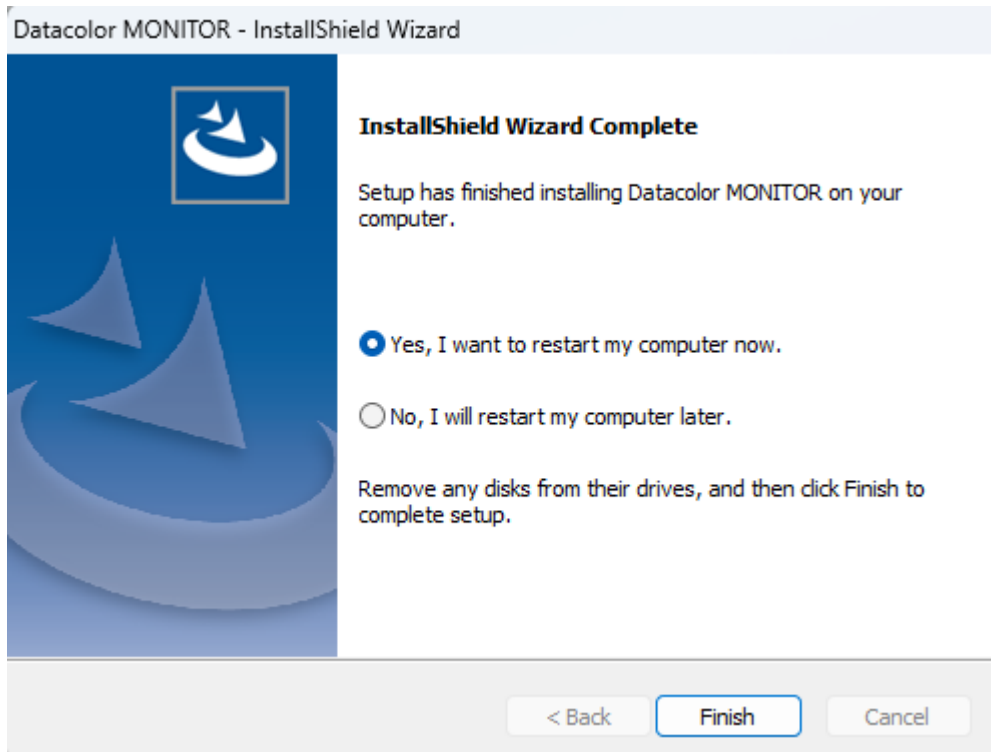


Instrument USB Drivers 64bit



Installing Datacolor Match Textile Common Components Component...

The installation will finish, and you will see this dialog:



Datacolor MONITOR is now installed on your system!